



wireline
services

OUR VISION

To become one of the leading indigenous Oil and Gas service companies in Nigeria and West Africa by 2010.

OUR MISSION

To provide the best value in services for the oil and gas industry in Nigeria and West Africa.

Best value means providing the fit-for-purpose solutions that best meet our clients' criteria and resources through the following:

Maintenance of a keen competitive edge through efficiency, high service quality and good safety record.

Training, motivation and empowerment of the indigenous personnel to maintain top-quality service delivery at all times.

Develop a dominant market presence.

Table of Content

| | |
|------------------------------------|----|
| Geoplex Profile | 1 |
| Production Logging Tools | 3 |
| Capacitance Array Tool | 5 |
| Casing and Tubing Inspection | 6 |
| Cement Evaluation..... | 7 |
| Pipe Recovery | 8 |
| Perforating Service | 10 |
| Downhole Tractor.. | 12 |
| Plugs and Packers | 13 |
| Data Acquisition System | 15 |
| OEM / Partners | 16 |

Corporate Head Office

9A/9B Joseph Adu Street,
Oniru Estate, Victoria Island Extension,
Lagos NIGERIA.

☎ +234 1 873 6370, 262 7559

☎ +234 1 262 7559

Operations Office

2, Chief Nwuke Road
Trans Amadi Industrial Layout
Port Harcourt, Rivers State
NIGERIA.

☎ +234 84 612736, 612737

email

contactus@geoplex.com

url

www.geoplex.com

Geoplex Profile

Geoplex - The fastest growing indigenous Service Company in Nigeria today was established in June 2002 to provide Oilfield Services to the upstream sector of the fast expanding Oil and Gas industry in Nigeria and the West Africa Coastal region. The Government policies aimed at encouraging and ensuring more participation by competent Nigerians in the upstream Oil & Gas Industry has contributed to our growth process.

Geoplex provide high quality Wireline Services and has recently grown into other Drilling Technology services as enumerated below. The aim is to provide the best value in these services to our clients. Great emphasis is placed on quality of services, timely and cost effective service delivery and client relations extending beyond the wellsite site.

Our mission is to provide high quality services in a safe, secure and healthy environment, at value to our clients.

The Board of Geoplex comprises well-placed Nigerians with extensive executive experience, manifesting in the emergence of a preferred service provider

The Management Team comprises persons with direct experience in the provision of Measurements and Logging While Drilling, Directional Drilling, Gyro Surveys and Electric Wireline Logging services, in collaboration with its Foreign Technical Partners.

SERVICES

ELECTRIC WIRELINE OPEN HOLE SERVICES

- Dual Induction Log
- Dual Laterolog
- Micro Laterolog
- Litho Density Log
- Dual Detector Neutron Porosity Log
- Spectral Gamma-Ray Log
- Gamma-Ray Log
- Full Waveform Acoustic Log
- Acoustic Borehole Imager
- Four Arm Caliper Log
- Four Arm Dipmeter Log
- Acoustic Borehole Imager
- Formation Tester and Sampling Tool

CASED HOLE SERVICES

- GR-CCL
- Pressure, Temperature, Flowmeter, Fluid Density
- Quartz Gauge Pressure Measurement
- Reservoir Saturation Measurements, Thermal Decay Services
- Tubing Caliper Measurements
- Memory PLT
- Cement Bond Evaluation Log (CBL/VDL)
- Multifinger Caliper/Corrosion Measurements
- MULE Downhole Tractor
- Casing Guns High Shot Density
- Through Tubing Perforation
- TCP
- Tubing Punchers
- Through Tubing Plugs and Packers
- Tubing Cutters
- Pipe Cutters/Split Shot
- Casing Patch

Corporate Head Office

9A/9B Joseph Adu Street,
Oniru Estate, Victoria Island Extension,
Lagos NIGERIA.

☎ +234 1 873 6370, 262 7559

☎ +234 1 262 7559

Operations Office

2, Chief Nwuke Road
Trans Amadi Industrial Layout
Port Harcourt, Rivers State
NIGERIA.

☎ +234 84 612736, 612737

email
contactus@geoplex.com

url
www.geoplex.com

Other services offered are Drilling Technology Services

TRACK RECORDS

- Shell Nigeria - 3-year BLC (Big Lever Club) contract Wireline Services
- Exxon-Mobil Erha project 2 year contract - Cased Hole Services
- Addax Petroleum 2 year Contract Wireline Logging Services
- SNEPCO Deep water 2 year contract Cased hole Services
- Total Akpo Project 2 year contract Cased Hole Services
- Numerous call-out arrangements: DWC/Platform Petroleum, CONOIL, NPDC/SIPEC, Frontier Oil, NAOC, Moni Pulo, Chevron etc

- Titan Specialties: Downhole Tools/Accessories
- Owen Oil Tools: Perforating and Pipe Cutting Systems
- DHSOil: North Seeking Gyro Technologies.
- Schlumberger: Open hole Logging.
- Baker: Directional Drilling, LWD/MWD.
- Elmar: Pressure Control System.

ALLIANCES

Geoplex, in collaboration with its partners, has developed its services using mainly indigenous personnel, and commands a good share of the market. It is our intent to always deliver good return on investment to all stake-holders; FGN, NNPC, NAPIMS, Oil Producing Companies, Investors, Partners, Shareholders and Process Personnel while being responsible to the host communities.

We parade some the industry best as our partners:

- Sondex/GE: Production Logging and MWD'LWD Technologies.



Corporate Head Office

9A/9B Joseph Adu Street,
Oniru Estate, Victoria Island Extension,
Lagos NIGERIA.
☎ +234 1 873 6370, 262 7559
☎ +234 1 262 7559

Operations Office

2, Chief Nwuke Road
Trans Amadi Industrial Layout
Port Harcourt, Rivers State
NIGERIA.
☎ +234 84 612736, 612737

email
contactus@geoplex.com

url
www.geoplex.com

Production Logging Tools

The Sondex range of Production Logging Tools gathers all the data which is needed to analyse to 570°F and 20,000psi downhole and fluid conditions. Standard tool ratings are 350°F and 15,000psi, special tools will go to 570°F and 20,000psi.

Flowmeters

Caged Fullbore (CFB) available for casing from 3/2 to 95/s"

3 arm closed sizes 1 3/8" & 1 11/16 "

6 arm closed sizes 1 11/16 "

Jewelled bearing (CFJ) body sizes 1 3/8" & 1 11/16 "

Spinner section diameters 1 1/16" & 2 1/8 "

In-Line Spinners (ILS) 1 11/16 "

Spinner section diameters 1 1/16" & 2 1/8 "

Diverter Basket Flowmeters (DBT) available for casing up to 9 5/8 "

Body sizes 1 11/16, 2 1/8 & 2 7/8 "

Fluid Identification

Capacitance Water Hold-up (CWH)

Body sizes 1 3/8", 1 11/16 & 2 1/8 "

Fluid Density

Radioactive (FDR) body sizes 1 3/8 & 1 11/16 "

Differential Pressure (FDD) body size 1 11/16 "

Pressure

Quartz Pressure Gauge (QPS) body sizes 1 3/8 & 1 11/16 "

Correlation Tools

Casing Collar Locator (CCL) body sizes 1 3/8 & 1 11/16 "

Gamma Ray Tools (PGR) body sizes 1 3/8 & 1 11/16 "

Correlation Tools

Casing Collar Locator (CCL) body sizes 1 3/8 & 1 11/16 "

Gamma Ray Tools (PGR) body sizes 1 3/8 & 1 11/16 "

Diameter Measurement

X-Y Caliper (PDC) body sizes 1 11/16 & 2 1/8 "

Flowmeters
3 Arm CFB

Flowmeters
6 Arm CFB

Flowmeters
DBT

Fluid identification
FDR

Diameter measurement
PDC



Corporate Head Office

9A/9B Joseph Adu Street,
Oniru Estate, Victoria Island Extension,
Lagos NIGERIA.

☎ +234 1 873 6370, 262 7559

☎ +234 1 262 7559

Operations Office

2, Chief Nwuke Road
Trans Amadi Industrial Layout
Port Harcourt, Rivers State
NIGERIA.

☎ +234 84 612736, 612737

email
contactus@geoplex.com

url
www.geoplex.com

Inclination

Inclinometer/Accelerometer (PIA) body size 1 11/16”
 Open bole model available after 2 1/8 “

Porosity Measurement

Compensated Neutron Tool (CNL) 1 11/16 “
 A combination tool with CCL Gamma Ray, Near & Far Neutron; this can be combined with other Ultrawire tools. Uses a radioactive source.

Gravel Pack

Radioactive Gravel Pack tool (GPT) body size 1 11/16 “

Telemetry & Memory

Memory to Surface Readout
 Ultralink (XTU) body sizes 1 3/8 “ & 1 11/16 “
 Sondex Standard (XMW) body sizes fl/s Pt 111(16)
 Atlas (XSA) body size 1 11/16
 Halliburton 1553 (XSH) body size 1 11/16 ”

Memory Sections
 Available in increments of 32Mb up to 128Mb (MPL)
 Battery holders for 5 x “C” cell (MBH)

Short Combination Tools

Short Combination Tools body sizes 1 3/8 “ & 1 11/16 “
 Combined Flow/Capacitance/Temperature (CTF)
 Pressure/CCL (QPC)
 These tools are used to make very short strings, they can be used combined with other tools of the same diameter, e.g. FDR, PGR, PRC etc.

High Temperature Production Toolstring

Rated at 572°F (300°C) and 20,000 psi with flow, capacitance, Temperature, pressure, gamma & CCL

Shooting CCLs

Shooting CCL (SCL) body sizes 1 7/16”, 1 11/16” & 2 1/8”

Deployment Tools (all with electrical feed through)

Roller Centralisers
 3 arm (PRC) body sizes 1 11/16 & 2 1/8”
 4 arm ultra low friction (PRC) body sizes 1 11/16 & 2 1/8”
 6 arm (PRC) body size 2 3/8”
 Anti-rotation models (PRC) body sizes 1 11/16 7 2 1/8”
 Easy Entry models (PRC) 1 1/16”

Springbow Centralisers
 3 arm (PSC) body size 1 3/8”
 6 arm (PSC) body size 1 11/16”

Knuckle Joints
 Ball joint type (PKJ) body size 1 11/16”
 Double joints (PKJ) body size 1 11/16”

Swivel Joints
 Single conductor (PSJ) body sizes 1 11/16 & 2 1/8”

Shock Reduction
 Perforation Shock Reducer (PSR) body size 2 1/8’

Head Tension
 Tension a Compression (HTU) body size 1 11/16”



Deployment Tools
 4 Arm PRC

Deployment Tools
 PKJ

Corporate Head Office

9A/9B Joseph Adu Street,
 Oniru Estate, Victoria Island Extension,
 Lagos NIGERIA.
 ☎ +234 1 873 6370, 262 7559
 📠 +234 1 262 7559

Operations Office

2, Chief Nwuke Road
 Trans Amadi Industrial Layout
 Port Harcourt, Rivers State
 NIGERIA.
 ☎ +234 84 612736, 612737

email
 contactus@geoplex.com

url
 www.geoplex.com

Capacitance Array Tool

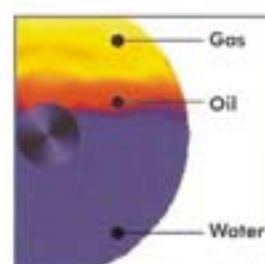
Standard PL tools can be run effectively in horizontal and highly deviated wells when a single phase, for example only oil, is present. However, once two or even three separated phases are produced, the fluid mechanics and interrelation between the phases become much more complex. Changes in well inclination add further complications and can affect production rates. Data from standard tools is insufficient to accurately evaluate phase distribution along a horizontal section.

The unique Sondex solution for identification of these separated phases is the Capacitance Array Tool (CAT). This 1 11/16" tool can be run in combination with the standard PL tools supplementing and clarifying their data.

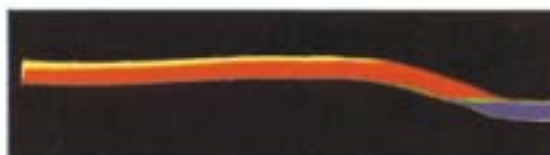
The CAT tool has twelve simultaneously reading sensors that are deployed around the circumference of the wellbore and all at the same depth. The readings provide the identification of the fluid surrounding each sensor enabling a true phase related cross-section to be generated. Fast sampling of each sensor provides sufficient data so that the tool can be moved along the well to generate a 3D log of phase distribution against depth. Alternatively, if the tool is stationary, a log of phase composition variations against time can be produced.



CAT View plot watered out well



Cross-section of three phases



Production well with water, oil & gas phases



of phase distribution against depth. Alternatively, if the tool is stationary, a log of phase composition variations against time can be produced.

The data can be plotted as 3D images with CALview software; these can be related to well shape using original directional survey data or by running an inclthorneter tool



Capacitance Array Tool

Corporate Head Office

9A/9B Joseph Adu Street,
Oniru Estate, Victoria Island Extension,
Lagos NIGERIA.

☎ +234 1 873 6370, 262 7559

☎ +234 1 262 7559

Operations Office

2, Chief Nwuke Road
Trans Amadi Industrial Layout
Port Harcourt, Rivers State
NIGERIA.

☎ +234 84 612736, 612737

email
contactus@geoplex.com

url
www.geoplex.com

Casing & Tubing Inspection

The productive life of an oil well can be reduced by the condition of the well itself. Deterioration of the casing or tubing can be caused by corrosion, unintentional damage during drilling and intervention or formation movement. Scale build-up can also reduce production. Exact knowledge of a well's condition can minimise remedial work by either providing early warning of a potential problem or by giving the data for determining a specific restoration programme.

The combination of Sondex Multifinger Caliper and Thickness tools gives a complete in-situ description of the down hole metal conditions, contributing significantly to cost reduction and extension of well life. Tool data can be recorded and presented using Warrior software based Sondex MIDAS systems.

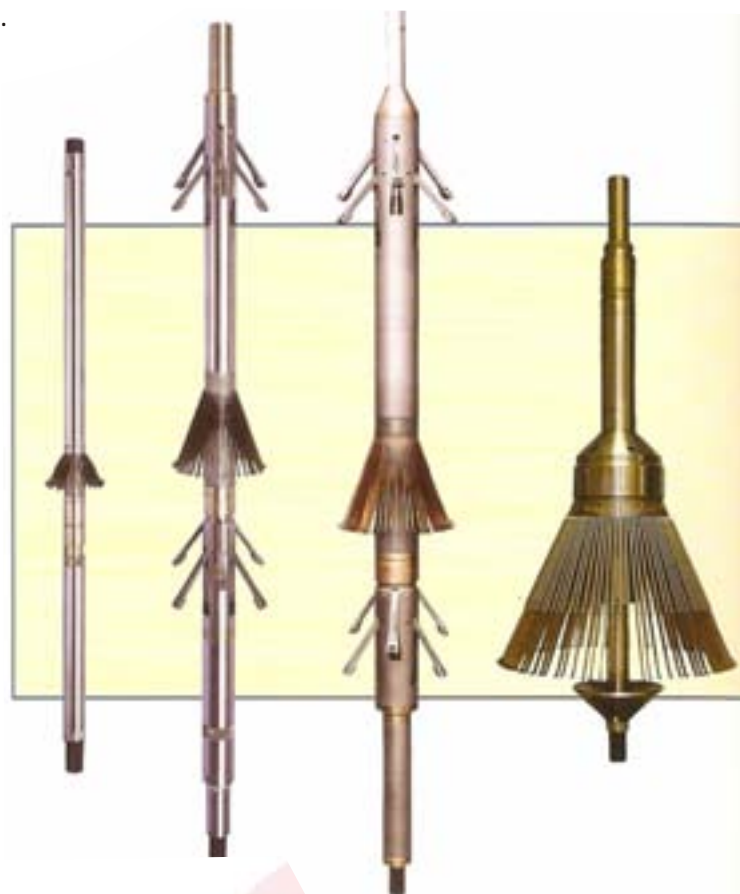
Multi-Finger Imaging Tools (MIT)

These tools accurately measure the internal dimensions of a tubular using fingers in direct contact with its surface. The measurements, which have a resolution of a few thousandths of an inch, are not affected by well fluids including gas. Tool diameters available are 1", 2f4, 4 Ft 8 inches with 24, 40, 60 Ft 80 fingers respectively; these provide a measuring range from less than 2 up to 20 inches. Surface Readout or memory (slickline) versions are available.

Sondex Multi-Finger Imaging Tools are often run before setting a plug or packer, or before kicking off side-tracks in order to identify the cleanest stretch of pipe. Many other downhole features such as perforations, orientation of side-pockets etc. will also be recorded by the MIT.

MIT data files are processed by software packages to produce both statistical reports and 3D images which are powerful tools in determining well condition. Additionally it is possible to use the data to determine well deformation and hence gain useful information for access purposes and about reservoir movement.

The data enables engineers to make informed decisions covering the abandonment or repair of a well. Repairs can be made that are precisely tailored to the requirement and wells brought back into commercial production.



Corporate Head Office

9A/9B Joseph Adu Street,
Oniru Estate, Victoria Island Extension,
Lagos NIGERIA.

☎ +234 1 873 6370, 262 7559

☎ +234 1 262 7559

Operations Office

2, Chief Nwuke Road
Trans Amadi Industrial Layout
Port Harcourt, Rivers State
NIGERIA.

☎ +234 84 612736, 612737

email
contactus@geoplex.com

url
www.geoplex.com

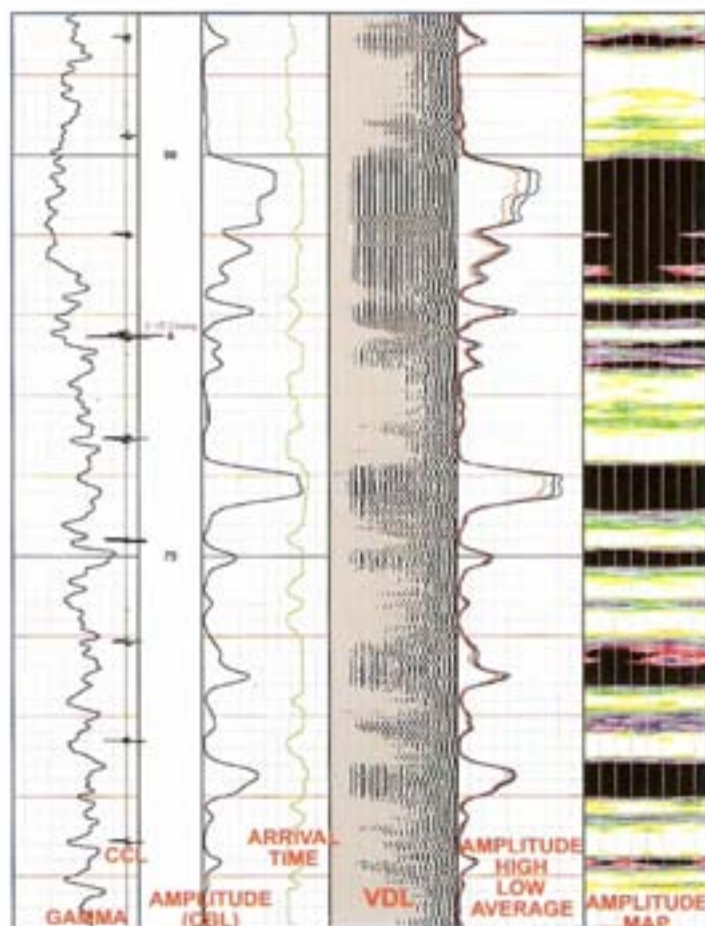
Cement Evaluation



The basic reasons for casing a well are to provide wellbore stability, zonal isolation and control of well fluids. Cement provides mechanical support for the casing and the isolation seal between the casing and the formation. Without effective isolation there is a risk of communication between zones, water infiltration and leakage to the surface.

A traditional Cement Bond Log (CBL) measures the amplitude of a sonic signal passing along the casing: this signal is reduced where the casing is bonded to the cement. While cement bonds that are either complete or totally absent can be clearly identified, signals showing partial bonds provide insufficient data to determine hydraulic isolation. A Radial Bond Tool (RBT) overcomes this problem by using multiple receivers positioned circumferentially around the tool. Each provides bond data covering a sector of the casing so that a map of the cement can be generated in addition to a conventional CBL log.

Currently Sondex offers RBT tools at 1 11/16" & 3 1/8" rated at temperatures up to 204°C (400°F) and pressure up to 25000psi. New versions of these tools are under development to provide Ultrawire compatibility and significantly the first memory RBT. A RBT specific acquisition system is available.



Output fro 3 1/8 8 sector Sondex RBT

Corporate Head Office

9A/9B Joseph Adu Street,
Oniru Estate, Victoria Island Extension,
Lagos NIGERIA.

☎ +234 1 873 6370, 262 7559

☎ +234 1 262 7559

Operations Office

2, Chief Nwuke Road
Trans Amadi Industrial Layout
Port Harcourt, Rivers State
NIGERIA.

☎ +234 84 612736, 612737

email

contactus@geoplex.com

url

www.geoplex.com

Pipe Recovery

Tube Cutters

Owen's Tubing Cutters were designed to cut tubing during Pipe Recovery Operations.

"Air shippable" at Class 1.4S

Conforms to API RP-67

Cutters should be centralized and run in recommended applications to maximize effectiveness of tool.

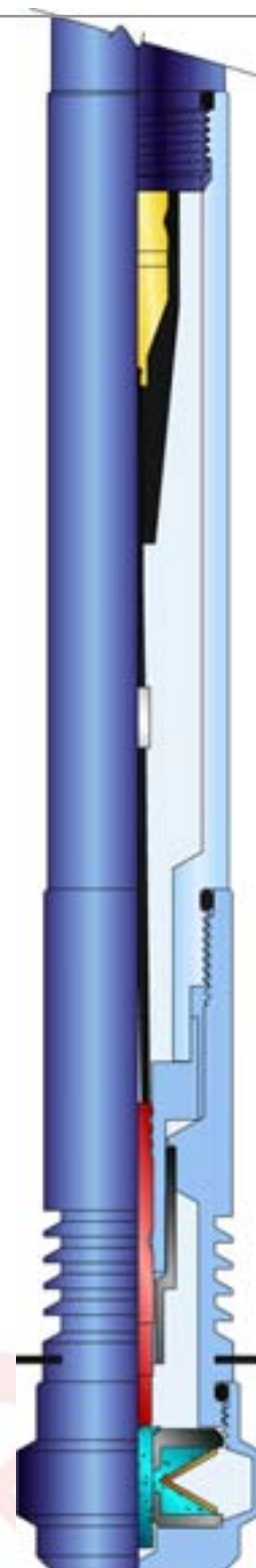
| Running Diameter | 1-5/32" (GOEX) | 1.230" | 1.230 (GOEX) | 1.390" |
|-------------------------|--------------------|--------------------|--------------------|--------------------|
| Temperature Rating (F) | 400 - 500 | 400 - 500 | 400 - 500 | 400 - 500 |
| Pressure Rating (PSI) | 15,000 | 12,000 | 15,000 | 15,000 |
| Explosive Weight (g) | 7.0 | 14.0 | 7.7 | 18.0 |
| Recommended Application | 1.66" Tubing, 2.4# | 1.66" Tubing, 2.4# | 1.66" Tubing, 2.4# | 1.90" Tubing, 2.9# |

| Running Diameter | 1.390" (GOEX) | 1.460" (GOEX) | 1.560" | 1.560" (GOEX) |
|-------------------------|---------------------|-----------------------|-----------------------|-----------------------------|
| Temperature Rating (F) | 400 - 500 | 400 - 500 | 400 - 500 | 400 - 500 |
| Pressure Rating (PSI) | 15,000 | 15,000 | 15,000 | 15,000 |
| Explosive Weight (g) | 10.7 | 20.7 | 11.0 | 20.0 |
| Recommended Application | 1.90" Tubing, 2.90# | 2-1/16" Tubing, 3.25# | 2-1/16" Tubing, 3.25# | 2 3/8" Tubing, 4.85 & 6.65# |

| Running Diameter | 1 11/16" | 1 11/16" (GOEX) | 1 3/4" | 1 3/4" (GOEX) |
|-------------------------|---------------------|-----------------------------|---------------------|-----------------------------|
| Temperature Rating (F) | 400 - 500 | 400 - 500 | 400 - 500 | 400 - 500 |
| Pressure Rating (PSI) | 15,000 | 15,000 | 15,000 | 15,000 |
| Explosive Weight (g) | 13.0 | 20.8 | 13.0 | 19.7 |
| Recommended Application | 2-3/8" Tubing, 4.7# | 2-3/8" Tubing, 4.85 & 6.65# | 2-3/8" Tubing, 4.7# | 2-3/8" Tubing, 4.85 & 6.65# |

| Running Diameter | 1 13/16" | 1 13/16" (GOEX) | 2 1/16" | 2 1/16" (GOEX) |
|-------------------------|---------------------|-----------------------------|---------------------|----------------------|
| Temperature Rating (F) | 400 - 500 | 400 - 500 | 400 - 500 | 400 - 500 |
| Pressure Rating (PSI) | 15,000 | 15,000 | 15,000 | 15,000 |
| Explosive Weight (g) | 13.0 | 19.7 | 22.7 | 26.8 (1.1D) |
| Recommended Application | 2-3/8" Tubing, 4.7# | 2-3/8" Tubing, 4.85 & 6.65# | 2-7/8" Tubing, 8.7# | 2-7/8" Tubing, 6.85# |

| Running Diameter | 2 1/8" | 2 1/8" (GOEX) | 2-1/4" | 2-1/4" (GOEX) |
|-------------------------|---------------------|----------------------|---------------------|----------------------|
| Temperature Rating (F) | 400 - 500 | 400 - 500 | 400 - 500 | 400 - 500 |
| Pressure Rating (PSI) | 15,000 | 15,000 | 15,000 | 15,000 |
| Explosive Weight (g) | 18.0 | 26.8 (1.1D) | 18.0 | 26.8 (1.1D) |
| Recommended Application | 2-7/8" Tubing, 6.5# | 2-7/8" Tubing, 6.85# | 2-7/8" Tubing, 6.5# | 2-7/8" Tubing, 6.85# |



Corporate Head Office

9A/9B Joseph Adu Street,
Oniru Estate, Victoria Island Extension,
Lagos NIGERIA.

☎ +234 1 873 6370, 262 7559

☎ +234 1 262 7559

Operations Office

2, Chief Nwuke Road
Trans Amadi Industrial Layout
Port Harcourt, Rivers State
NIGERIA.

☎ +234 84 612736, 612737

email
contactus@geoplex.com

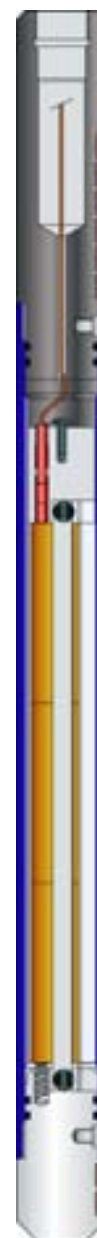
url
www.geoplex.com

Split Cutter

Owen’s Split Shot Cutter was designed for use where traditional jet cutters were not effective or could not be used. The Split Shot Cutter is run in a linear configuration adjacent to any collar or connection and positioned by inline magnets. After detonation the collar or connection is split allowing the pipe to be freed for easy removal.

Benefits / Capabilities

- ☐ “Air shippable” at Class 1.4S
- ☐ Conforms to API RP-67
- ☐ Can be run through heavy mud, paraffin, collapsed tubing, and reduced restrictions.
- ☐ Can be run 4X faster than conventional jet cutters.
- ☐ Must be run decentralized to maximize effectiveness of tool.



Specifications

| Running Diameter | 7/8" | 1.00" | 1-3/8" | 1-3/8" | 2.00" | 2.00" |
|--------------------------|-----------------|-----------------|----------------|-----------------|-------------|--------------|
| Change Length (in) | 12 | 12 | 18 - 24 | 18 - 24 | 18 - 48 | 18 - 48 |
| Charge Load (grain / ft) | 500 | 500 | 600 | 900 | 1200 | 2000 |
| Temperature Rating (F) | 325 - 400 | 325 - 400 | 325 - 400 | 325 - 400 | 325 - 400 | 325 - 400 |
| Pressure Rating (PSI) | 6,500 | 10,000 | 18,000 | 18,000 | 18,000 | 18,000 |
| Recommended Application | 1.315" - 2-3/8" | 1.315" - 2-3/8" | 1.66" - 2-7/8" | 2-3/8" - 4-1/2" | 2-7/8" - 7" | 3-1/2" - 16" |

Corporate Head Office

9A/9B Joseph Adu Street,
Oniru Estate, Victoria Island Extension,
Lagos NIGERIA.

☎ +234 1 873 6370, 262 7559

☎ +234 1 262 7559

Operations Office

2, Chief Nwuke Road
Trans Amadi Industrial Layout
Port Harcourt, Rivers State
NIGERIA.

☎ +234 84 612736, 612737

email
contactus@geoplex.com

url
www.geoplex.com

Perforating Service

Spiral Strip System

Owen's Spiral Shogun, when combined with the new Shogun N.T. Charge, poses the three most important features of an ideal perforator - Ideal Phasing, Deep Penetration, and High Shot Density

Benefits & Capabilities

- 6 spf in 1-11/16" & 2-1/8" versions
- N.T. Shogun charge shoots 40% better than standard Shogun DP charge
- 40° & 60° Spiral phasing available

Specifications

| O.D. | 1-11/16" | 2-1/8" | 2-1/2" |
|------------------|-----------|---------|----------|
| Min. Restriction | 1-25/32" | 2-3/16" | 2-19/32" |
| Pressure Rating | See Table | | |
| Temperature* | 375° F | | |

* HNS/Nona Charge Capable of 450°F available

| Part No. | Charge Description | Pressure Rating |
|-------------------|--|----------------------|
| STP-1687-401NTX | Charge, 1-11/16" HMX, Shogun NT, DP | 20,000 psi (138 Mpa) |
| STP-1687-401NT | Charge, 1-11/16" HMX, Shogun NT, DP | |
| STP-1687-401NB | Charge, 1-11/16" HMX, Shogun NT, BH | |
| STP-1687-301E | Charge, 1-11/16" RDX, Shogun II DP | 15,000 psi (103 Mpa) |
| STP-1687-301BE | Charge, 1-11/16" RDX, Shogun II BH | |
| STP-2125-401NTX | Charge, 2-1/8" HMX, Shogun NTX, DP | 20,000 psi (138 Mpa) |
| STP-2125-401NT | Charge, 2-1/8" HMX, Shogun NT, DP | |
| STP-2125-401NB | Charge, 2-1/8" HMX, Shogun NT, BH | |
| STP-2125-301E | Charge, 2-1/8" RDX, Shogun II DP | 15,000 psi (103 Mpa) |
| STP-2125-301BE | Charge, 2-1/8" RDX, Shogun II BH | |
| STP-2500-401NT | Charge, 2-1/2" HMX, Spiral Shogun NT, SDP | 20,000 psi (138 Mpa) |
| STP-2500-401NTXII | Charge, 2-1/2" HMX, Spiral Shogun NTXII, SDP | |

***This product is protected by one or more of the following patents: 5,542,480; 5,662,178; 5,638,901**



Corporate Head Office

9A/9B Joseph Adu Street,
Oniru Estate, Victoria Island Extension,
Lagos NIGERIA.

☎ +234 1 873 6370, 262 7559

☎ +234 1 262 7559

Operations Office

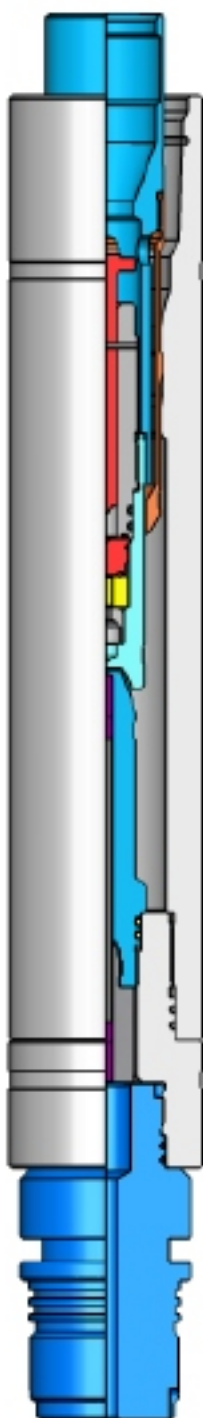
2, Chief Nwuke Road
Trans Amadi Industrial Layout
Port Harcourt, Rivers State
NIGERIA.

☎ +234 84 612736, 612737

email
contactus@geoplex.com

url
www.geoplex.com

Retrievable Firing Set



The Wireline Set/Retrievable Firing Head is designed to increase perforating safety by means of having the primary firing system removed from the TCP string while running Perforating Guns into a well. This is accomplished by utilizing a Landing Assembly that is fixed into the top of the Perforating Guns in the TCP string and a Firing Head that is set in place with Wireline or Slickline after the Perforating Guns are set on depth. The Firing Head houses the primary explosive required to detonate the Perforating Guns, making the TCP string protected from accidental detonation.

Features and Benefits

- This system is designed for use with the Mechanical Impact, Mechanical Safety Impact Firing Heads and Wide Nose
- Provides an economical means of setting and retrieving a firing Head within the TCP string
- Assures that accidental detonation cannot happen while running or removing the TCP string from a well provides a double check with Wireline that the Perforating Guns are on depth while setting the Firing Head, resulting in minimized possibility of shooting off depth
- In case of a misrun, the Firing Head can be retrieved and inspected without pulling the entire TCP string
- At least one full tubing joint filled with fluid on top of the Firing Head is recommended for optimum drop bar impact.

| | Wireline Set/Retrievable Firing Head | | 3-1/2 in Landing Assembly | | Wireline Set/Retrievable Firing Head Extended Neck | |
|------------------------------------|--------------------------------------|-------------|---------------------------|-------------|--|-------------|
| Maximum OD | 2.729 in | 69.3 mm | 4.500 in | 114.3 mm | 2.729 in | 69.3 mm |
| Minimum ID | 1.312 in | 33.3 mm | 2.510 in | 63.8 mm | 1.312 in | 33.3 mm |
| Overall Length | 15.750 in | 400.1 mm | 25.000 in | 635.0 mm | 22.625 in | 574.7 mm |
| Max Burst Pressure ² | N/A | N/A | 16,750 psi | 115,450 kPa | N/A | N/A |
| Max Collapse Pressure ² | 16,700 psi | 115,100 kPa | 21,140 psi | 145,750 kPa | 16,700 psi | 115,100 kPa |
| Max Tensile | 13,700 lb | 6,100 daN | 163,200 lb | 72,600 daN | 13,700 lb | 6,100 daN |
| Max Temp ¹ | 250°F (121°C) | | | | | |
| Top Connection | 3.000 in Internal Fish Neck | | 3-1/2 in (88.9 mm) EU Box | | 3.000 in Internal Fish Neck | |
| Bottom Connection | N/A | | 2.750 - 6 TPI Acme Box | | N/A | |
| Product Number | TC-014-3500-000 | | TC-014-3500-300 | | TC-014-3500-400 | |
| Redress Kit | TC-014-3500-099 | | | | | |

Corporate Head Office

9A/9B Joseph Adu Street,
Oniru Estate, Victoria Island Extension,
Lagos NIGERIA.

☎ +234 1 873 6370, 262 7559

☎ +234 1 262 7559

Operations Office

2, Chief Nwuke Road
Trans Amadi Industrial Layout
Port Harcourt, Rivers State
NIGERIA.

☎ +234 84 612736, 612737

email

contactus@geoplex.com

url

www.geoplex.com

Downhole Tractor

The Sondex downhole tractor is used on mono-conductor wireline in highly deviated wells for conveyance of logging tools, perforating guns etc. Easy to use, easy to transport, the device can operate in varying well diameters, and has constant communication with the surface giving absolute control.

Tractor Tool

The tractor is 2 1/8" in diameter and 24.5 feet long and can be used to push other tools in wells with casing sizes up to 9" ID. It is normally made up with two sets of deployable drive wheels and two strong centralisers. Extra drive sections can be added for use in wells with complex construction or far use in Open Hole.

Also included in the tool are a Casing Collar Locator and a Head Tension tool together with an electronics section to provide complete control and transmit status data to the surface.

Tractor Surface Equipment

To control the tractor only a small power panel and notebook computer are required. Most of the control is achieved using the computer which prompts for manual changes to the supply voltage provided by the panel.

The computer also displays the applied power, drive arm status and position, tractor load, head tension, depth, speed and CCL log.

WEST

The Well Entry Simulation Toolkit (WEST) will plot the shape of a well and predict the tractor loading with depth. It will show if a particular combination of tools and cable can be expected to reach the required depth. During a job, deviations from a prediction and the displayed data can be early indications of potential problems caused by collapse or debris. This level of planning has resulted in the Sondex tractor making hundreds of successful deployment operations.



Corporate Head Office

9A/9B Joseph Adu Street,
Oniru Estate, Victoria Island Extension,
Lagos NIGERIA.

☎ +234 1 873 6370, 262 7559

☎ +234 1 262 7559

Operations Office

2, Chief Nwuke Road
Trans Amadi Industrial Layout
Port Harcourt, Rivers State
NIGERIA.

☎ +234 84 612736, 612737

email
contactus@geoplex.com

url
www.geoplex.com

Plugs & Packers

Positive Seal Plugs (PSP)

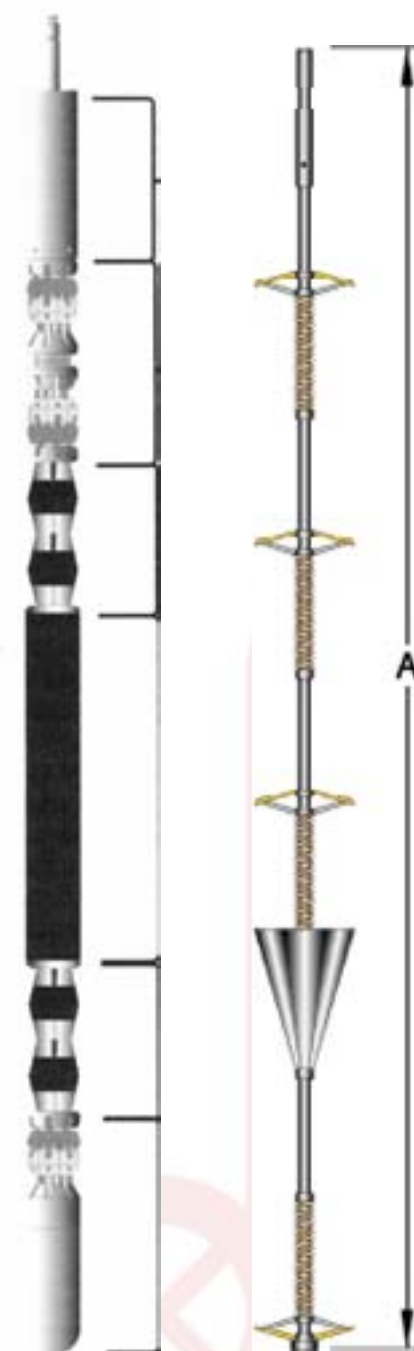
PSP is a high-expansion compression set plug intended to pass through restrictions and set in tubulars whose ID can be up to 3 % times the run-in diameter of the plug. PSP setting operations combined with “Healing System” eliminate problems that are inherent with extended service lives in high- expansion compression set plugs. PSPs stout bi-directional anchor fixes the plug in place until it is intentionally released and pushed to bottom.

PSP’s Healing System (patent pending) abates the deleterious effects of flow-cut seals, anelastic creep, elastomeric stress relaxation and adverse effects of thermal transients related to shut-in cycles and zonal treatment cycles. Healing System maintains hydraulic sealing function in compression set plugs. Healing System assures extended PSP service life.

PSP has more seal-to-casing engagement length than any other high-expansion plug with equal run-in diameter. PSPs composite seal system combined with its anti- extrusion system provides hydraulic sealing at high expansion ratios. Transient bursts of fluid past seals (caused by spikes of differential pressure greater than the plugs service rating) can flow-cut seals. The combination of PSPs composite high tech seals and its Healing System re-establish seal integrity. Healing System is not without limits. Excessive or prolonged bursts of flow can cause irreparable damage and permanent loss of hydraulic seal.

PSP is available in two basic models, i.e., standard and releasable. The Standard Model is a permanent plug. The Releasable Model can be unset via an HPI release tool. Once released, the PSP falls to bottom or is pushed to bottom.

PSP can be run on electric line, slick line and tubing.
PSP and Healing System are trademarks of HPI.
Multiple patents are pending on PSP technologies



Corporate Head Office

9A/9B Joseph Adu Street,
Oniru Estate, Victoria Island Extension,
Lagos NIGERIA.

☎ +234 1 873 6370, 262 7559

☎ +234 1 262 7559

Operations Office

2, Chief Nwuke Road
Trans Amadi Industrial Layout
Port Harcourt, Rivers State
NIGERIA.

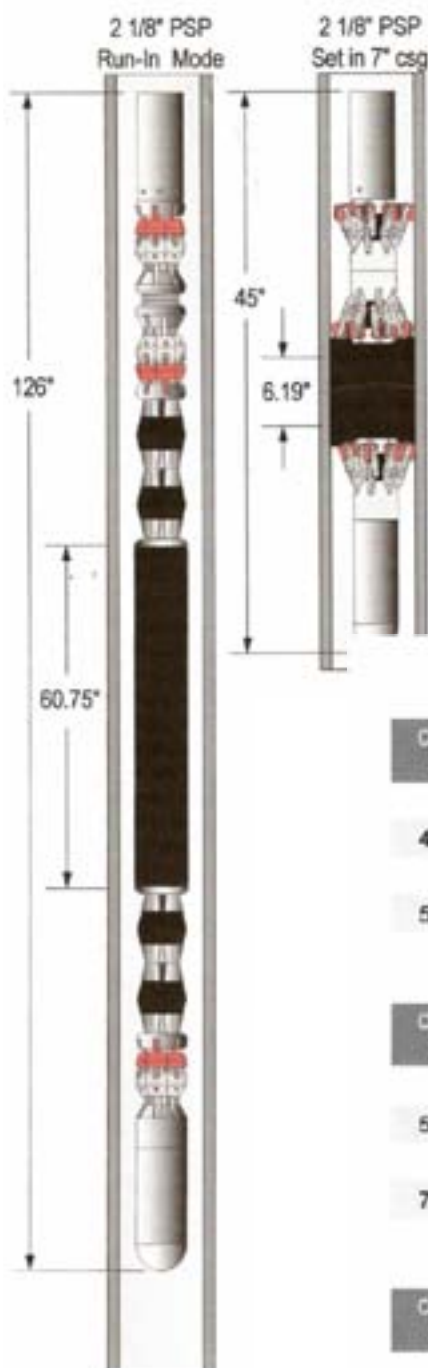
☎ +234 84 612736, 612737

email

contactus@geoplex.com

url

www.geoplex.com



The PSP is a high-expansion compression-set plug designed to pass through small restrictions and set in larger ID up to 3.25X the plug run-in diameter. The PSP can be deployed via electric line, coiled tubing, or wireline(with power pack).

The PSP has several key features to ensure a high integrity plug:

- Bidirectional Anchor “Healing System”
- Anti-extrusion Support System
- High Performance Elastomer
- 3 1/2” Model is Releasable

PSP and Healing Systems are trademarks of HPI. PSP Systems are patent protected by US P/N6,31 8,461 & US PIN6,311 ,778, with other patents pending.

1-3/4" PSP System (Permanent)

| Casing Size | Maximum OD(in.) | Run-in Length(in.) | Set Length(in.) | Seal Engagement(in.) | Minimum Restriction(in.) | Max. BHT | Max. Diff. Pressure(psi) |
|-------------|-----------------|--------------------|-----------------|----------------------|--------------------------|----------|--------------------------|
| 4" | 1.75 | (*) | (*) | (*) | 1.81 | 350°F | 2500* |
| 4 1/2" | 1.75 | 93 | 46 | 4.50 | 1.81 | 350°F | 2500* |
| 5" | 1.75 | 91 | 44 | 3.13 | 1.81 | 350°F | 2500* |
| 5 1/2" | 1.75 | 91 | 37 | 3.00 | 1.81 | 350°F | 2500* |

2-1/8" PSP System (Permanent)

| Casing Size | Maximum OD(in.) | Run-in Length(in.) | Set Length(in.) | Seal Engagement(in.) | Minimum Restriction(in.) | Max. BHT | Max. Diff. Pressure(psi) |
|-------------|-----------------|--------------------|-----------------|----------------------|--------------------------|----------|--------------------------|
| 5" | 2.13 | 80 | 40 | 6.19 | 2.31 | 350°F | 2500* |
| 5 1/2" | 2.13 | 92 | 41 | 6.19 | 2.31 | 350°F | 2500* |
| 7" | 2.13 | 126 | 45 | 6.19 | 2.31 | 350°F | 2000* |
| 7 5/8" | 2.13 | 126 | 45 | 5.00 | 2.31 | 340°F | 1250* |

3-1/2" PSP System (Releasable)

| Casing Size | Maximum OD(in.) | Run-in Length(in.) | Set Length(in.) | Seal Engagement(in.) | Minimum Restriction(in.) | Max. BHT | Max. Diff. Pressure(psi) |
|-------------|-----------------|--------------------|-----------------|----------------------|--------------------------|----------|--------------------------|
| 7" | 3.53 | 104 | 60 | 6.50 | 3.62 | 350°F | 3500* |
| 7 5/8" | 3.53 | 108.50 | 60 | 6.00 | 3.62 | 350°F | 3000* |
| 9 5/8" | 3.53 | 156 | 73 | 6.00 | 3.62 | 300°F | 1500* |
| 10 3/4" | 3.53 | (*) | (*) | (*) | (*) | (*) | (*) |

Corporate Head Office

9A/9B Joseph Adu Street,
Oniru Estate, Victoria Island Extension,
Lagos NIGERIA.

☎ +234 1 873 6370, 262 7559

☎ +234 1 262 7559

Operations Office

2, Chief Nwuke Road
Trans Amadi Industrial Layout
Port Harcourt, Rivers State
NIGERIA.

☎ +234 84 612736, 612737

email
contactus@geoplex.com

url
www.geoplex.com

Data Acquisition Systems

A single integrated telemetry platform benefits from an integrated acquisition system to exploit its flexibility. A system capable of running all Sondex product lines gives the end user significant advantages in terms of inventory, logistics and training.

The Surface Readout systems can be a full rack-mounting in a truck or skid unit. An extremely portable, fully functional unit is also available for use with Ultrawire tools.

Memory operations only require a laptop computer, an interface and a Depth/Time recorder with an encoder.

Midas Recording Systems

Full rack mount (DRS004) Micro Midas suitcase system.



Intrinsic Safe
Depth / Time Recorder



Micro MIDAS



Full Rack mount MIDAS

Corporate Head Office

9A/9B Joseph Adu Street,
Oniru Estate, Victoria Island Extension,
Lagos NIGERIA.

☎ +234 1 873 6370, 262 7559

☎ +234 1 262 7559

Operations Office

2, Chief Nwuke Road
Trans Amadi Industrial Layout
Port Harcourt, Rivers State
NIGERIA.

☎ +234 84 612736, 612737

email
contactus@geoplex.com

url
www.geoplex.com

OEM / Partners

Geoplex main Technical Partner is Messrs. SONDEX of Hampshire, UK who is one of the world's leading manufacturers of tools and systems for Production Logging Services. SONDEX tools are being used worldwide by the three leading Production Logging Services providers. Based on the above and our business strategy, there is a tremendous synergy between SONDEX; whose business is primarily focused on research, design and manufacture of leading edge technology and reliable production tools, and Geoplex Limited, an indigenous company whose primary focus is providing value added Production Logging Services locally.

SONDEX

Leading edge, innovative, cost-effective solutions in MWD /LWD tools and equipment; Production Logging design and manufacturing.

A worldwide reputation with international oil and gas companies with over 20 years experience in the Wireline Production Logging sector.

Company divisions include: Mechanical and Electronics Engineering, Software Development, Technical Services, Sales and Marketing, Machine Shop and Quality Control.

SONDEX tools are used worldwide for major Oil Producing Companies in different countries including: Canada, United States, UK, Norway, Russia, Nigeria, Angola, Australia, Venezuela and Vietnam.

Products and Services include:

- MWD Tools and Equipment
- LWD Tools and Equipment
- Production Logging Tools
- Acquisition System
- Measuring System
- Wireline Units
- Pressure Control Equipment

Other services include:

- Specialty Oilfield Projects
- Software Development
- Machine Shop Services
- Electrical and Mechanical Designs
- Service and Repair Downhole Tools
- A good reference-list.
- Good R & D and track record of continuing development and evolution of software-based solutions and fine downhole tools.

DHSOIL

- World leader in design and manufacture of North Seeking Gyros. Proved industry reputation and reliability.

Corporate Head Office

9A/9B Joseph Adu Street,
Oniru Estate, Victoria Island Extension,
Lagos NIGERIA.

☎ +234 1 873 6370,262 7559

☎ +234 1 262 7559

Operations Office

2, Chief Nwuke Road
Trans Amadi Industrial Layout
Port Harcourt, Rivers State
NIGERIA.

☎ +234 84 612736, 612737

email
contactus@geoplex.com

url
www.geoplex.com



Corporate Head Office
9A/9B Joseph Adu Street,
Oniru Estate, Victoria Island
Extension,
Lagos NIGERIA.
+234 1 873 6370, 262 7559

Operations Office
2, Chief Nwuke Road,
Trans Amadi Industrial Layout,
Port Harcourt, Rivers State,
NIGERIA.
+234 84 612736, 612737

Fax
(234-1) 262 7559
email
contactus@geoplex.com

www.geoplex.com